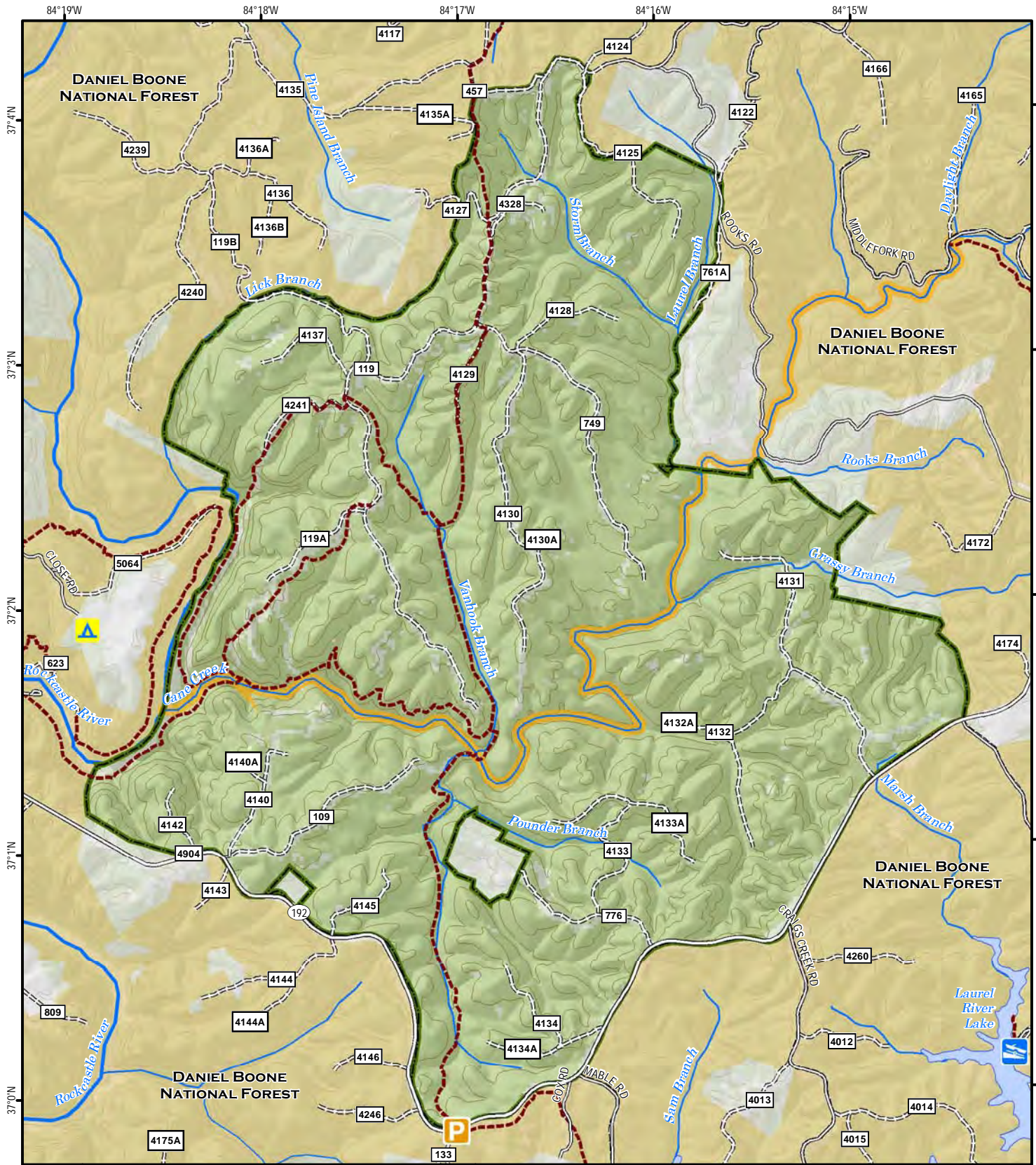


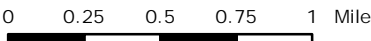


Cane Creek Wildlife Management Area



A map legend and additional information are provided on PDF pages that accompany this map.

Publication Date: 06/22/2011



Scale 1:40,000

Contour interval: 100 feet



Note to Map Users

Map prepared by Kentucky Department of Fish & Wildlife Resources (KDFWR). Although KDFWR strives for accuracy, data used to create this map are from a variety of sources and dates; as such, KDFWR makes no representations regarding the accuracy or fitness for use of the information furnished herein.

Cane Creek WMA Information

Public Hunting Area Location



Regional Locator



Directions & Description: Approximately 15 miles west of London. To the southern portion, from London: Travel 11 miles southwest on Hwy 192. Use map to access desired destination. To the northern portion, from London: Take Hwy 192 west approximately 6 miles. Turn right on Line Creek-Cold Hill Road (FR 56). Travel 2.7 miles and bear left on FR 119 (gravel road). Travel 5.9 miles to the WMA on the left.

Access by interior roads and traversed by Sheltoewe Trace trail. Primarily hilly, steep terrain, mostly forested with only a few openings. No developed facilities. For camping check with owner. Within Daniel Boone National Forest. Owned by U.S. Forest Service

For more online information about this public hunting area [click here](http://fw.ky.gov/kfwis/arcims/wma.asp?strId=38).
<http://fw.ky.gov/kfwis/arcims/wma.asp?strId=38>

Online Resources

Public Hunting Area users must abide by the Kentucky hunting, trapping, and fishing regulations. It is incumbent on persons using Public Hunting Areas to become familiar with these regulations. Kentucky Department of Fish & Wildlife Resources provides these regulations on our Web site at fw.ky.gov or by calling 1-800-858-1549. If you are viewing this as a PDF, clicking on the links below will direct your browser to our regulations and maps.

Scan the QR code with your smart phone for more information.



WMA Overview

Location & Size: Laurel County, 6,691 acres

Contact (606) 376-8083; London Ranger district
606-864-4163

Elevation minimum 728 feet, maximum 1296 feet.

Entrance GPS coordinates: Latitude N 36.99752,
Longitude W -84.28476



Area Habitat mostly forest: open land 6%, forest
94%, wetland 0%, open water 0%.

Wildlife Management Area Map Notes & Legend

NOTE TO MAP USERS:

For most WMA maps the landscape is depicted using a combination of elevation contours, hillshading and a green tint indicating woodland areas that is derived from satellite imagery. On WMAs that are relatively small or have a history of surface mining aerial photography is used.

WMA Map Legend

	WMA Office		WMA Boundary		Populated Place
	Information Kiosk		Aerial photograph		Kentucky Boundary
	Check station		Other Public Hunting Areas		Interstate Highway
	Mobility-impaired Hunting Blind		Area Off Limits		Kentucky Parkway
	Trailhead		No Hunting		U.S. Highway
	Horseback Trailhead		Seasonally Restricted Access		State Highway
	Parking Lot		Mobility Impaired Hunting Area		Local Road
	Picnic Area		Primitive Hunting Only		Forest Service Road
	Restrooms		Foot Traffic Only		Active Railroad
	Wildlife Viewing Site		Open Water		Abandoned Railroad
	Interpretive Site		Wetland		Federal Recreation Trail
	Retriever Training Site		Woodland		WMA Road
	Gate				WMA Foot Trail
	Campground				WMA Horse Trail
	Cemetery				Gas Pipeline
	Corps of Engineers Office				Powerline
	Waterfowl Blind				Rivers and Streams
	Shooting Range				Dam
	Established Bank Access				Trout Waters
	Fishing Pier				Elevation Contour
	Carrydown Launch				
	Small Boat Ramp				
	Large Boat Ramp				
	State Park Office				